



MAP & SUGGESTED ROUTES

ORCHARD HERITAGE TRAIL

The Orchard Heritage Trail is part of the National Heritage Board's ongoing efforts to document and present the history and social memories of places in Singapore. We hope this trail will bring back fond memories for those who have worked, lived or played in the area, and serve as a useful source of information for visitors.

Supported by



SUGGESTED SHORT TRAIL ROUTES

The Orchard Road area has transformed from a countryside retreat in the 1800s to the heart of Singapore's tourism and retail scene today. Through the three thematic trails below, discover the communities, institutions, businesses and natural heritage that contribute to this area's rich history.

Orchard Road's Historical Gems

40 min on foot; or 30 min with a bus ride (2.2km)

The Orchard Road area has a history that spans almost 200 years, and it contains historical landmarks which are the legacies of communities who lived and worked at Orchard Road long before it became a street known for its shopping malls.



Start your journey at the gate of the **Royal Thai Embassy**, which was part of the Claymore nutmeg orchard in the 1800s, and contained a house called Hurricane Cottage (later Hurricane House). During the late 1800s, King Chulalongkorn of Siam (now Thailand) bought Hurricane House. The house later served as Siam's Consulate (now the Royal Thai Embassy).*



From the embassy, walk to the Shaw House Orchard MRT entrance, take the underpass to Scotts Square and head to **Tang Plaza**. C K Tang was Orchard Road's first department store opened in 1958 as its owner Tang Choon Keng recognised Orchard Road's potential as a shopping hub. The original C K Tang building was redeveloped into Tang Plaza in the 1980s.



Next, walk up Scotts Road to **Goodwood Park Hotel**, a National Monument built in 1900 as a German social club called the Teutonia Club. Then head back towards Far East Plaza, where you can take a bus or proceed to walk to the bus stop opposite Mandarin Orchard.

From here, you can see **Ngee Ann City** across the road, which was built by the

Ngee Ann Kongsi on the site of its former Teochew cemetery in the 1980s. Next to Ngee Ann City is **Mandarin Orchard Hotel**, Singapore's tallest building when it opened in 1971.



Behind the bus stop is **The Heeren**, the site of the original Heeren Building which was built in 1931 by Chee Swee Cheng, a Peranakan businessman. Here, you can find a sculpture called **Budak-budak** which serves as a reminder of the area's Peranakan heritage.

Another Peranakan landmark located nearby is the **former Singapore Chinese Girls' School**, which operated from eminent Peranakan Dr Lim Boon Keng's former house in 1926-94. The blue-and-white school building can still be seen today. Please note that this building is not open to the public.

Cross Cairnhill Road and continue down Orchard Road until you reach Peranakan Place, the gateway to **Emerald Hill**. This conserved residential neighbourhood contains many traditional shophouses and terrace houses from the early 1900s. Please be respectful of residents when taking photographs and when you are ready to head back, Somerset MRT is just across the Orchard Road.

*The Royal Thai Embassy is not open to walk-ins but it hosts regular cultural festivals which are open to the public. Please check the embassy's Facebook page for further information.

Communities and Cemeteries

1 hour 15 min on foot (3.6km)

The Orchard Road of today is filled with shopping centres, restaurants and entertainment outlets, but the Orchard Road of the past had a different character and was filled with places of worship, schools, homes, community organisations and cemeteries.



Start your journey from Exit B of **Dhoby Ghaut MRT**. This area was the former site of the Sri Sivan Temple, the first Hindu religious site in Orchard Road. This Hindu shrine served worshippers such as dhobies (laundrymen) who worked at a *ghat* (stream bank) by Stamford Canal. Behind the temple was a former Jewish cemetery established in 1841.

Follow the footpath and cross Handy Road to see **Orchard Road Presbyterian Church*** and the **YMCA** on its left. These spaces served as places of worship and community service respectively for Orchard Road's early residents. Cross back to **Dhoby Ghaut Green**, walk up Penang Road, cross over to **Red Cross House**, which was built in 1960, and learn about the Red Cross Society's charitable efforts.



Next, head back to Penang Road and cross Clemenceau Avenue on the left to reach the **House of Tan Yeok Nee**. This National Monument is a grand Teochew mansion with two main courtyards. You can admire its intricate architecture, then head towards Cuppage Road, where you will find **Cuppage Terrace**, a row of conserved pre-war shophouses.



At the end of Cuppage Road stands **Sian Teck Tng**, a century-old Buddhist temple and former women's home. Please note that this site is not open to the public.

After viewing the temple, you may wish to take a short break at The Centrepoint, a site where the Cold Storage chain of supermarkets first started.

From The Centrepoint, head towards **Emerald Hill**, a conserved residential neighbourhood. As you walk up Emerald Hill, you will pass by traditional shophouses as well as the **former Singapore Chinese Girls' School**. Please note that the school building is not open to the public.



Turn onto Hullet Road, turn left at Cairnhill Road to reach the Orchard Road junction, and walk over to Bideford Road behind **The Heeren**, where you will find **Masjid Al-Falah**. Masjid Al-Falah is the only mosque on Orchard Road today. Please remember to remove your shoes if you wish to enter the mosque.

From the mosque, continue your journey towards Orchard MRT, and you will spot **Ngee Ann City** across the road which was the site of a former Teochew cemetery. This trail ends at **Tang Plaza**, where Orchard Road's first department store, C K Tang, opened in 1958. This venture marked the beginning of Orchard Road's transformation from a residential area into a modern shopping street.

*Visitors may enter Orchard Road Presbyterian Church after informing the staff if there are no services being conducted.

From Orchard to Garden

2 hours on foot; or 1.5 hours with a bus ride (4.7km)

The Orchard Road area was once covered with nutmeg orchards and although these orchards are long gone, the area still offers plenty of green spaces including the Butterfly Trail @ Orchard and Singapore's first UNESCO World Heritage Site.



Begin your journey at **Dhoby Ghaut Green**, outside Dhoby Ghaut MRT Exit B. This area was once part of a Botanical and Experimental Garden established by Stamford Raffles in 1822. Today, it is a community space featuring an open-air amphitheatre and Visual Arts Centre.



From here, cross Penang Lane to reach **Istana Park**, which contains a lily-pond and a lush garden that is part of the Butterfly Trail @ Orchard. Looking across Penang Road, you can see the **House of Tan Yeok Nee** which once belonged to Tan who owned many gambier estates in the 1800s. The building was gazetted a National Monument in 1974.



Walk down Cairnhill Road towards Scotts Road, turn left and walk past **Goodwood Park Hotel** (the former Teutonia Club) to reach **Far East Plaza**, where you can stop for some refreshments. From Far East Plaza, you can continue walking towards Tanglin Road or you can take bus 105 and alight opposite the Singapore Botanic Gardens.



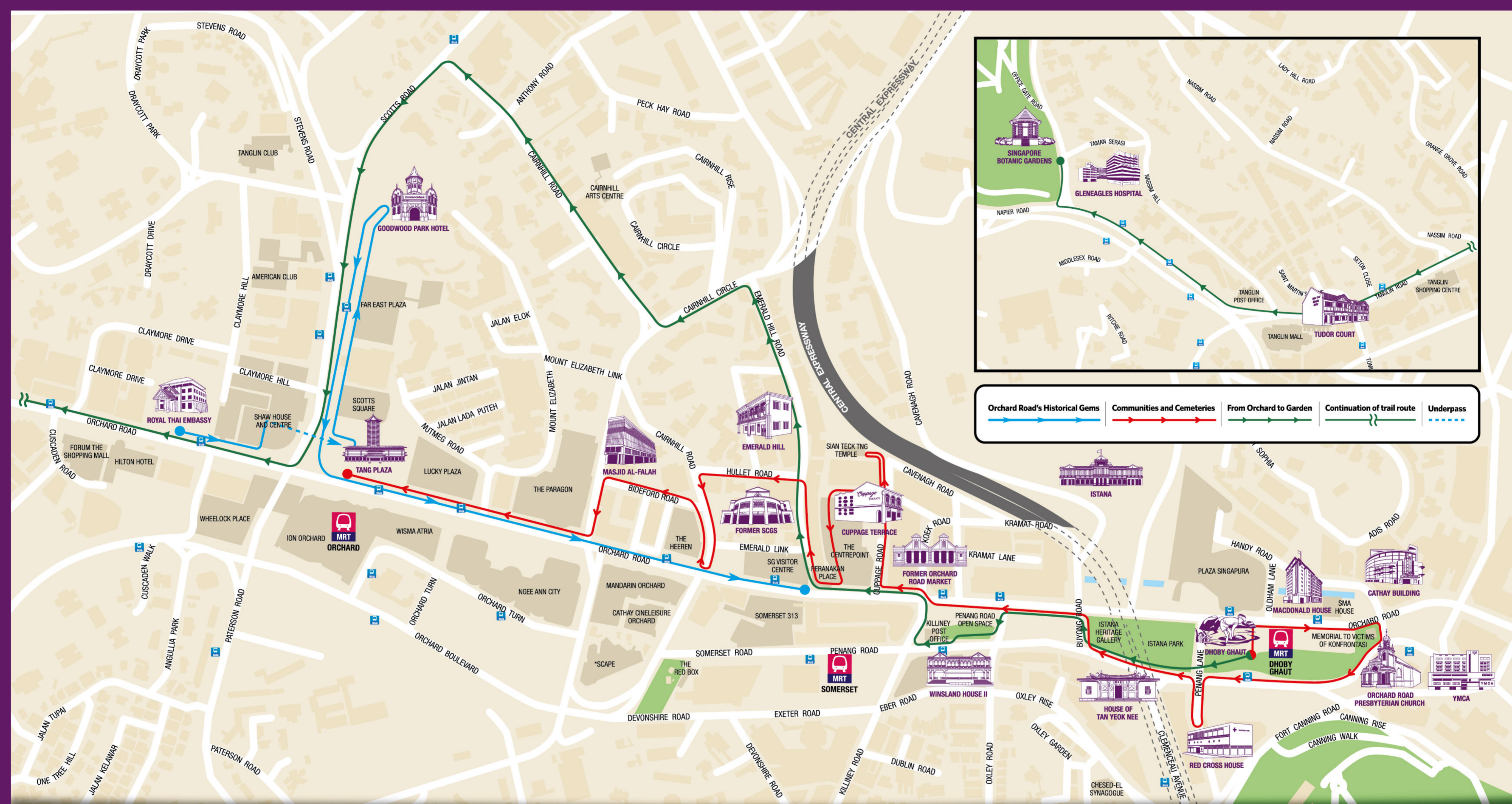
If you prefer to walk, take the underpass outside Scotts Square, exit via Shaw House, and head towards Tanglin Road. You will pass by the **Royal Thai Embassy**, formerly the Claymore nutmeg orchard. At Nassim Road, you will be able to spot some black and white colonial houses, as well as a butterfly garden. The conserved **Tudor Court** can also be seen across the road.

Next, cross Buyong Road and at the Oxley Road junction, cross over to **Penang Road Open Space**. This space contains another butterfly garden. This area used to be Thomas Oxley's nutmeg orchard in the 1840s before it became a residential neighbourhood. Across Somerset Road, you can see a beautiful conserved building (part of **Winsland House II**) from this residential era.



Proceed past Killiney Post Office, head to Orchard Road, cross at the Koek Road junction and head up **Emerald Hill**. This conserved area was once a nutmeg orchard but is now a quiet historical neighbourhood known for its terrace houses and traditional shophouses. At the top of Emerald Hill, turn left and cross to **Cairnhill Road** where you will find a row of conserved pre-war terrace houses.

At the junction of Tanglin Mall, turn right to Napier Road and head to the **Singapore Botanic Gardens**, which is the last stop on this trail. You can obtain a map at the Botany Centre near the Gardens' Tanglin Gate or you can head to the nearby **Holttum Hall**, which houses a Heritage Museum, to learn how the Gardens evolved from a gambier plantation to a UNESCO World Heritage Site.



HERITAGE SITES IN THE SUGGESTED SHORT TRAIL ROUTES



CATHAY BUILDING



CUPPAGE TERRACE



DHOBY GHAUT



EMERALD HILL



FORMER ORCHARD ROAD MARKET



FORMER SCGS



GLENEAGLES HOSPITAL



GOODWOOD PARK HOTEL



HOUSE OF TAN YEOK NEE



ISTANA



MACDONALD HOUSE



MASJID AL-FALAH



ORCHARD ROAD PRESBYTERIAN CHURCH



RED CROSS HOUSE



ROYAL THAI EMBASSY



SINGAPORE BOTANIC GARDENS



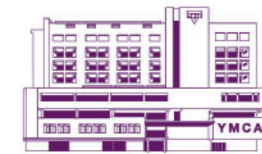
TANG PLAZA



TUDOR COURT



WINSLAND HOUSE II



YMCA

For more information, please download the Orchard Heritage Trail Companion Guide from www.roots.sg.

All information contained in this trail map is provided in good faith, and every reasonable effort has been made to ensure that the information is accurate and up to date at time of print. Accordingly, NHB makes no warranty or representation relating to the trail map and all information contained therein, and users relying on any of the information contained in the trail map shall do so at their own risk and diligence.

©2018 National Heritage Board. All rights reserved.