

Way Back Then!

Before the metropolis



A Clementi Heritage Trail

One Fine Day...



AHHH!

Route Map

2. Clementi
Arcade



3. HDB
Block 115



4. Jurong Railway



1. Sungei Ulu
Pandan PCN



LEGEND:



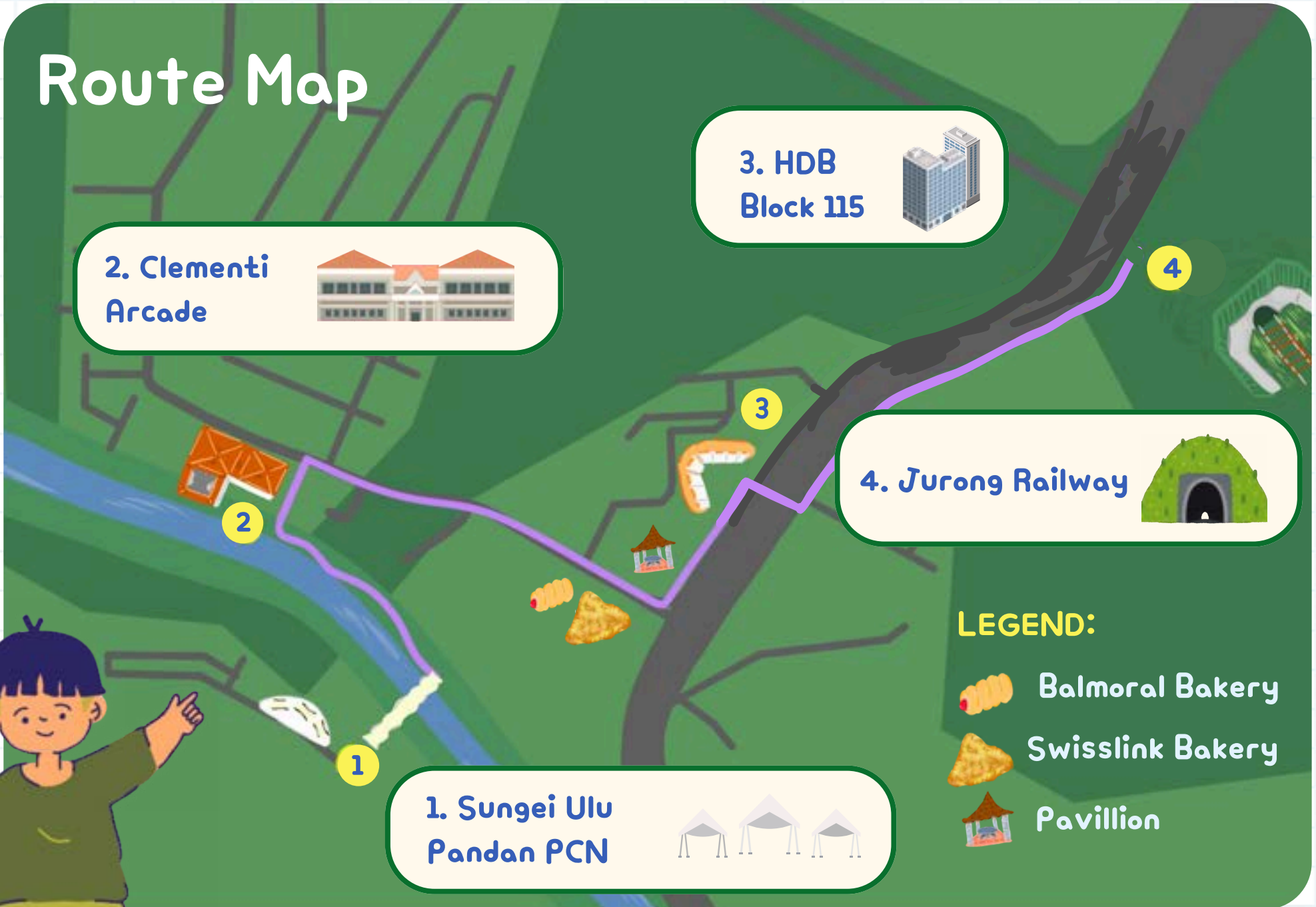
Balmoral Bakery



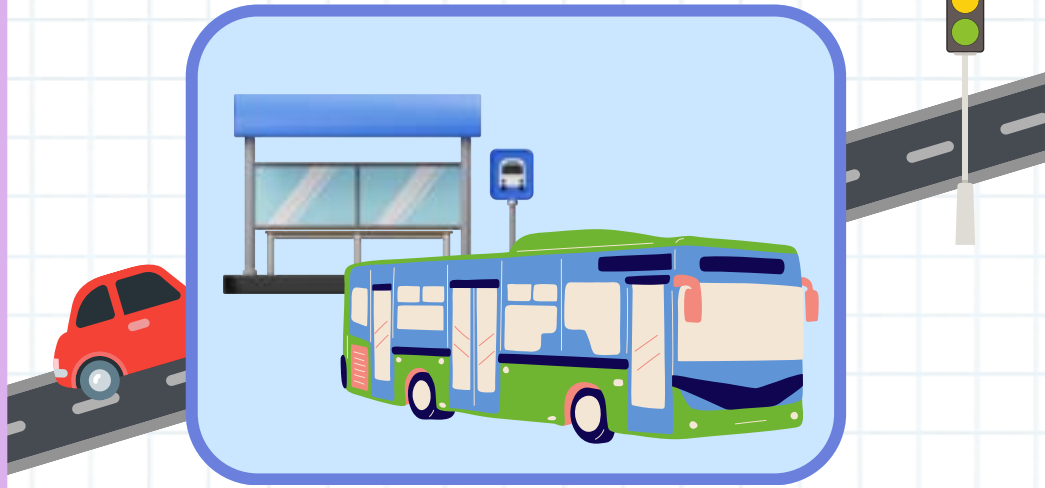
Swisslink Bakery



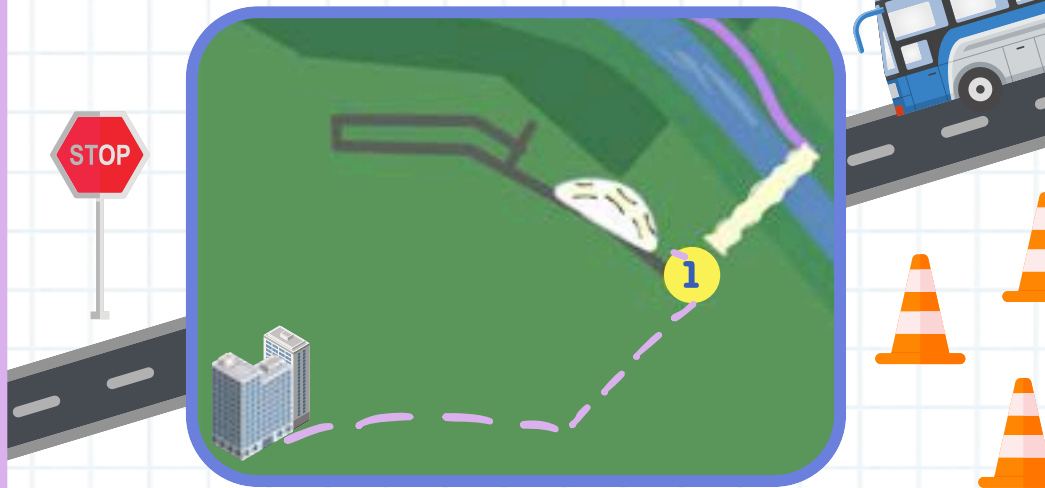
Pavillion



Getting there...



From the Clementi bus interchange, take bus 284 to Blk 308 (2 stops)



Walk 200m from Blk 308 to Sungei Ulu Pandan



Look out for the tarps!



Someone is calling for help!

Hello... Is anyone there? Where am I?



Oh! Who's that?

I'm Clement! I was running around my neighbourhood, when suddenly, out of nowhere, a strong wind swept me into the sky...

Clement vaguely recognises his surroundings, but he will require your help to find his way back to “then” – 1985!

Help him find his way back home by exploring sites of Clementi today!



Clement is a boy from 1985. Back then, Clementi had just transitioned from a kampung to a bustling town.

He remembers playing along the river, chatting with his friends and helping his parents to run errands around the neighbourhood.

On a fateful day in the 1985, Clement was suddenly swept away by a whirlwind while exploring his neighbourhood.

When he woke, he found himself in Clementi, in the year 2024.



WELL, WHAT ARE YOU WAITING FOR? LET'S GO!



Sungei Ulu Pandan

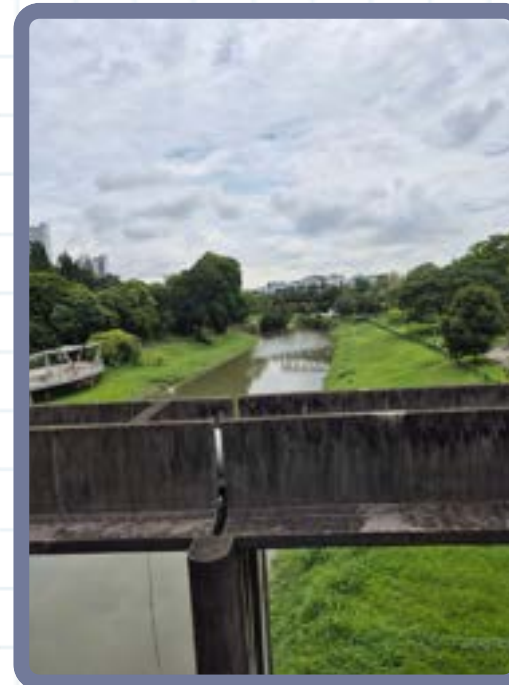
Did you know?

This area is where my grandparent's village once was. The villagers here were migrants from Anxi, Fujian Province! Things have changed so much!



These kampungs were key to Singapore's early days, marking the start of progress when our forefathers first settled here and shaped our future.

With this in mind, don't you feel like you are walking through an entirely new piece of history now?



Activity: Catching Clement



Let's play hide n' seek!

Find all the Clements hidden in the picture below!

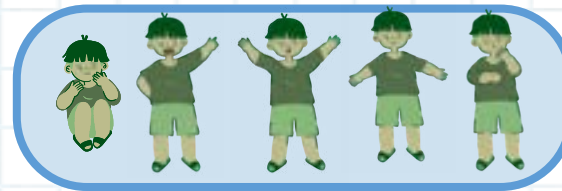


- 1) Circle Clement when you find him
(in order from left to right!)
- 2) Match the order of Clements found to
the correct option on the next page!
- 3) Safekeep the letters given with the
correct option.

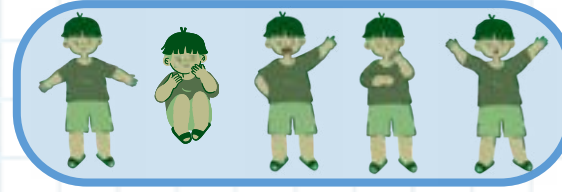
You did it! You found me!



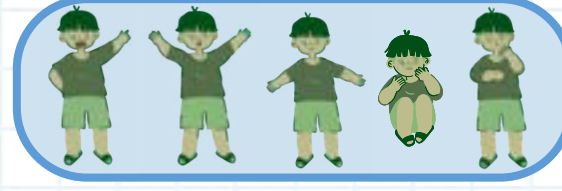
Find the correct order of Clements!



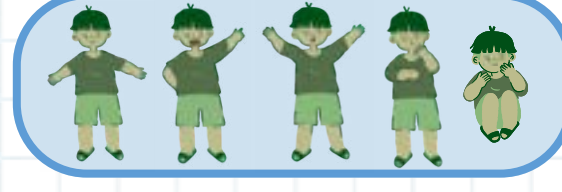
P, S, U



D, N, Z



E, Q, S



A, P, L

Letters:

Three empty rounded rectangular boxes for writing letters.



What's On The Way!



Let's cross the bridge and head to Clementi Arcade.



Take a look and see if you can spot the wildlife in the trees and water around you!



DIRECTIONS!

Spot the different flowers in the rain garden!



What are the benefits of a rain garden?

Pass the rain garden and the Jurong Railway Bridge



DIRECTIONS!



Look! It's the Clementi Arcade!

Clementi Arcade

“Arcade” does not refer to a video game! In architecture, it referred to a space lined with shops, with successive arches overhead!



I remember when my mother would have tea time with our neighbours to catch up once a week. They called it “ClemenTEA”!



Arches of Unity

Arches represent unity and connection.

The community was like family – Clementi Arcade housed shops of every kind, making it a convenient place to hang out!



Activity: Family and One



Chong Fah Cheong
Family (reworked into Family and One), 1985

Having a loving community is like having a big family, don't you think? We can always rely on one another, and make memories together!

Take a stroll around Clementi Arcade.
What are the pillars of community spirit?
Scan the QR code – let's find out together!



<https://forms.gle/TUngJARmDcrM2Ke97>



Picture spot!



Activity: Arches of Unity

Your task:

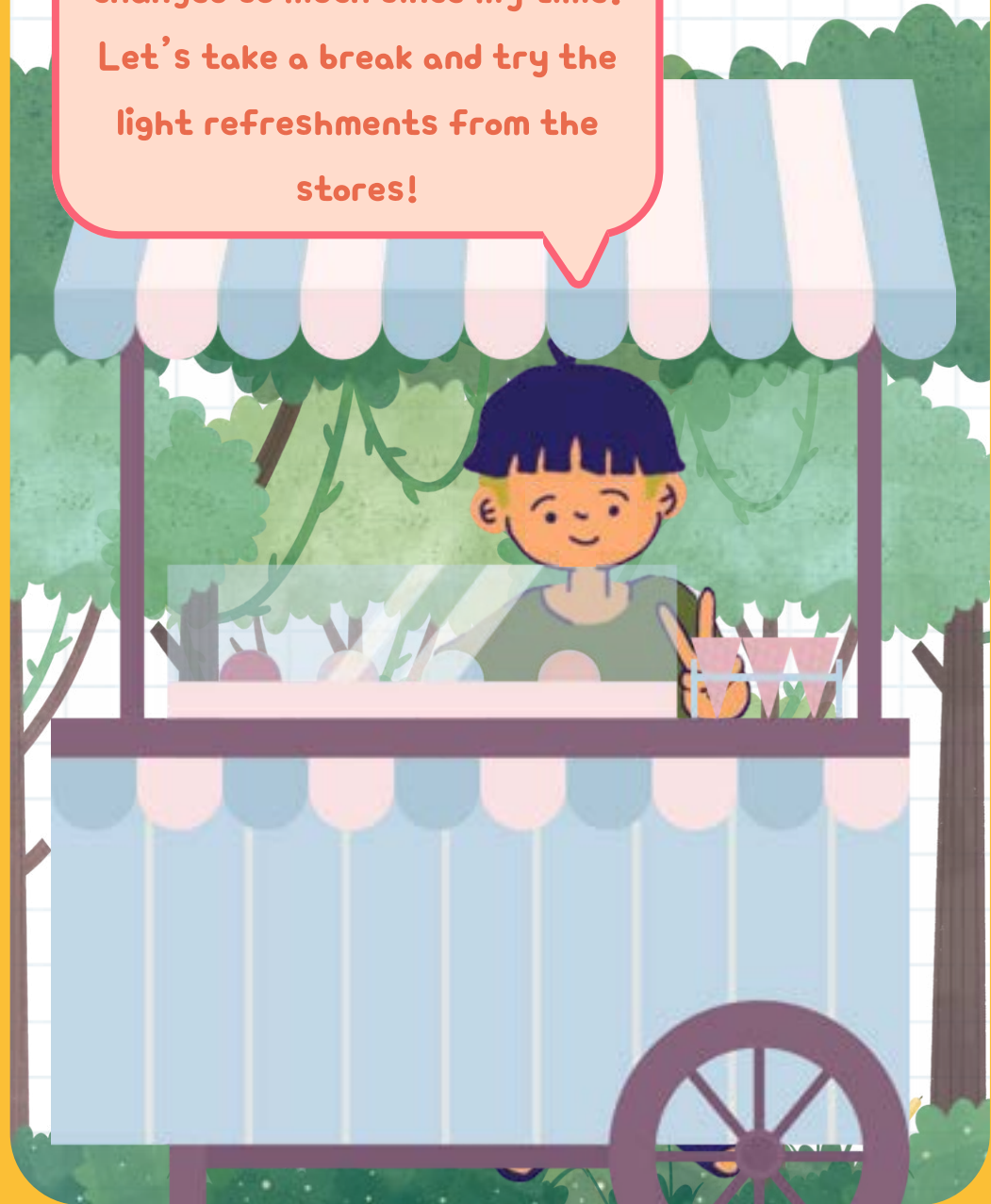
Circle the arched letters in 'Clementi'!

Psst, decipher the clue in your previous task to get your answer.

Clementi



This area in Clementi Arcade has changed so much since my time! Let's take a break and try the light refreshments from the stores!

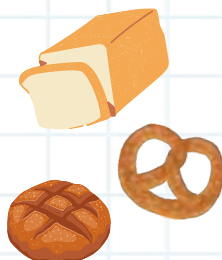


What's On The Way!

Balmoral Bakery



DIRECTIONS!



What is that yummy smell?

Swisslink Bakery and Cafe



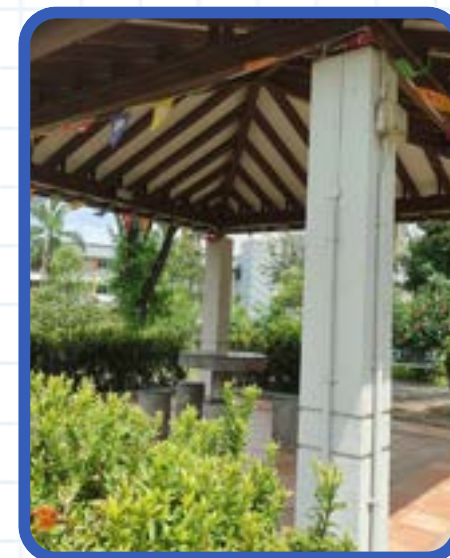
My mother always buys bread and pastries from here!

All this walking is so tiring... That pavilion looks like a good place to rest and replenish ourselves!



? How do spots like these benefit the community?

Pavilions are common gathering spaces located around the void deck.



HDB Block 115

Many HDB blocks in Clementi were built in the 1970s and 1980s, with Block 115 being completed in 1985!

HDBs have communal spaces which promote community living and spirit – people of all backgrounds rely upon one another!

We just moved in to this block! It looks a lot older than it does back home... I wonder if mom and dad still live here.



Did you know?

The construction of HDBs was a crucial development of our nation as we progressed from kampung to a bustling city. However, the kampung spirit is still ever-growing within our closely knit society.

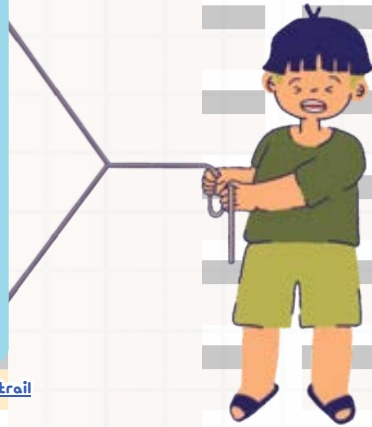
Hmm... Something about the buildings seems a little strange!



Activity: Community Connect

Activity time!

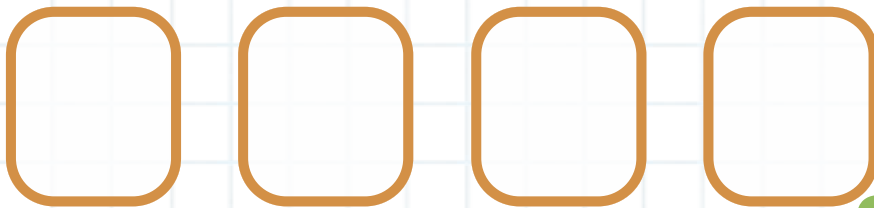
Scan this QR code to access the activity.



<https://www.jigsaw365.com/play/clementi-heritage-trail>

Instructions:

1. Rearrange the puzzle pieces
2. Trace out the hidden letters
3. Fill in the blanks below



(*Hint* : Red Indigo Blue Orange)

Take some pictures as a group at these spots too!



Take a group photo!



What's On The Way!

This place has changed so much!



DIRECTIONS!



Clementi's ongoing development has transformed it into a thriving and self-contained neighbourhood.



Wow! There are sheltered walkways now!



? How can we improve our neighbourhoods?

You are almost there, just cross the zebra crossing before Far East Flora!



You should see a narrow path down the slope here. Be careful when going down the path!

Jurong Railway

The Jurong Railway Line was one of Singapore's first railways, officially opening on 4th March 1966!

The railway, which operated until the mid-1990s, was a source of pride and delight for Clementi's residents.



The railway is like a train ride connecting our past and present!

Many fondly remember watching the trains passing through their neighbourhoods, creating a shared community experience.

Today, only a few parts of the railway track are left – can you imagine how taking the train looked like back then?



Picture Spot!

Activity: Railway Riddles

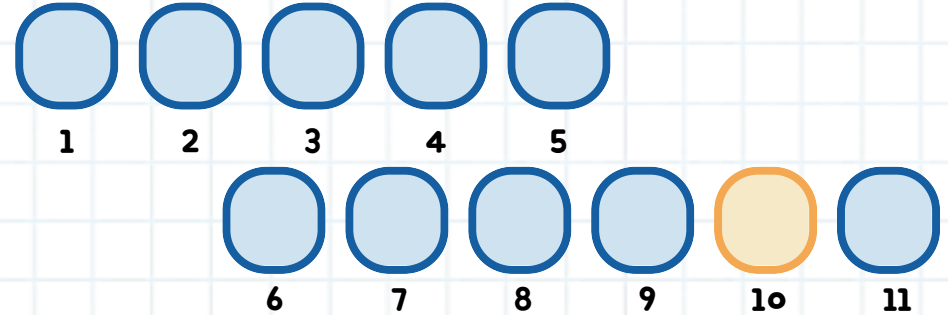
Your task:

You are given these 8 letters to form two words relating to the Jurong Railway.

(*Hint* : It is a parallel path that runs side by side, and spans far and wide)



A C I K N R S T



Hooray, you solved it!
The letter in the yellow box is the one you need!



Activity: One rail closes another road opens

Background information:

The KTM Jurong railway operated for over 20 years. However, as the years passed, more efficient transportation methods emerged. Thus, Jurong Railway's operations ceased by the mid-1990s.

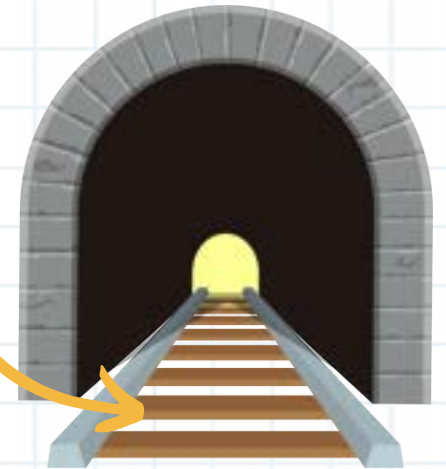
Here's a photo of the Old KTM Railway Tunnel!



Your task:

Starting from the first wooden railway tie at the mouth of the tunnel, count the number of ties it takes to reach the section of the tunnel with graffiti. Match the correct range of wooden ties to the corresponding letter below!

One railway tie



Number of wooden ties

30-40

40-50

50-60

60-70

Letters

E

L

B

A

The End Of The Tunnel

Hey! What is that metal box there?



*there isn't a physical box at the location

Final Activity:

ENTER
PASSWORD

The Locked Box

Using the collected letters throughout the booklet, unscramble them and fill in the blanks to get the password!

	P		R			

(*Hint* : Community, Unity, Togetherness)

Bye Bye Clement!

Oh, this is a time machine! I can finally go home! Thank you so much for helping me, I am excited to see what the future will bring!



Time Machine

SET TIME



ANSWER SHEET:

Activity: Catching Clement

Answer: P, S, U

Activity: Arches of Unity

Answer: Subjective answers

Activity: Arches of Unity

Answer: M, N

Activity: HDB Block 115

Answer: I, T, I, G

Activity: Railway Riddles

Answer: TRAIN TRACKS - K

**Activity: One rail closes another
road opens**

Answer: 60-70-A

Activity: The Locked box

Answer: KAMPUNG SPIRIT

What's this? There seems to be a hidden letter in the train tracks...



SCAN TO SEE WHAT IT SAYS!



References:

Clementi Heritage Trail jigsaw Puzzle online – Jigsaw 365. (n.d.).

Jigsaw 365. <https://www.jigsaw365.com/play/clementi-heritage-trail-d101bo51-e7be-4af6-b2be-ad101fbb7ec9>

Danao, M. (2024, February 27). Old Jurong Line Nature Trail takes you through Clementi Forest & historic railway tracks. Must Share News – Independent News for Singaporeans.

<https://mustsharenews.com/old-jurong-line-trail/>

ExplorerSG. (2021, August 20). Abandoned Jurong Railway Line

ExplorerSG. <https://explorersg.com/listings/abandoned-jurong-railway-line-trek/>

Family (reworked into Family and One) | National Gallery Singapore.

(n.d.). National Gallery Singapore.

<https://www.nationalgallery.sg/magazine/family-chong-fah-cheong>

Google. (n.d.). Google Forms.

<https://forms.google.com>.

Google. (n.d.). Google Maps. Retrieved August 4, 2024, from

<https://www.google.com/maps/@1.3242555,103.7732393,958m/data=!3m1!1e3?entry=ttu>

Jurong Railway. (n.d.). <https://www.roots.gov.sg/en/places/places-landing/Places/landmarks/jurong-heritage-trail/jurong-railway>

Lee, S. (2021, June 21). Off the Beaten Track: Old Jurong Rail Guide Part 1. Must Share Good Things. <https://msgt.com.sg/off-the-beaten-track-old-jurong-rail-guide-part-1/>

LetsBuild. (2023, September 19). What are arcades in architecture?

Letsbuild. <https://www.letsbuild.com/blog/what-are-arcades>

NParks announces the Old Jurong Line Nature Trail as part of the 18 km green recreational network within the new Clementi Nature Corridor. (2021, July 31). National Parks Board.

<https://www.nparks.gov.sg/news/2021/7/nparks-announces-the-old-jurong-line-nature-trail-as-part-of-the-18-km-green-recreational-network-within-the-new-clementi-nature-corridor>

QR Code Generator | Create your free QR codes. (2019, June 7).

<https://www.qr-code-generator.com/>

Singapore Clementi History: An In-Depth Look at the past |

Gems.Travel. (n.d.). Gems.Travel.

<https://www.gems.travel/article/asia/singapore/clementi/history>

Tan, E. J. (2024, July 4). Ulu Pandan Park Connector: Scenic route along the Sungei Pandan Canal – Little day out. Little Day Out.

<https://www.littledayout.com/ulu-pandan-park-connector-scenic-route-along-the-sungei-pandan-canal/>

Windows into Ulu Pandan Forest and Clementi Nature Corridor's past.

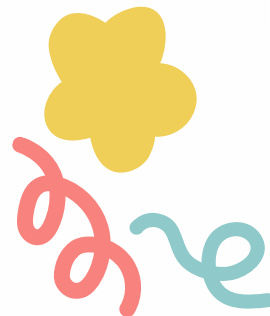
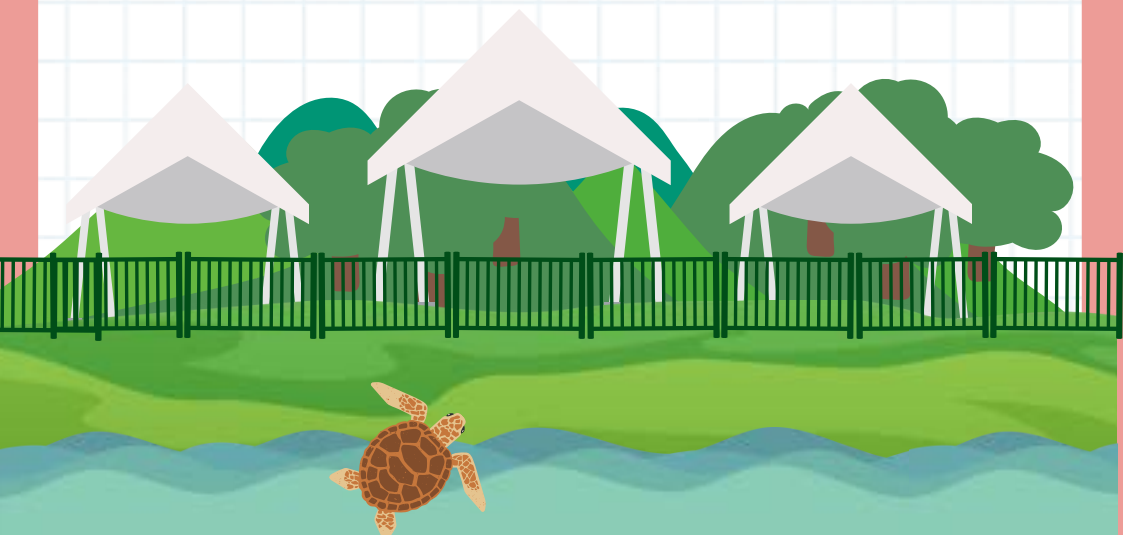
(2021, November 21). The Long and Winding Road.

<https://thelongnwindingroad.wordpress.com/2021/11/21/windows-into-ulu-pandan-forest-and-clementi-nature-corridors-past/>

Acknowledgments:

This Guidebook is a product of the following students' work from Ngee Ann Polytechnic's Introduction to Arts and Heritage Management module:

Ashton Chionh Wen Rui
Chen Yong Qi Pamela
Lee Ee Hern
Peck Chin Shuen



Part of:



Presented by:



Supported by:

